

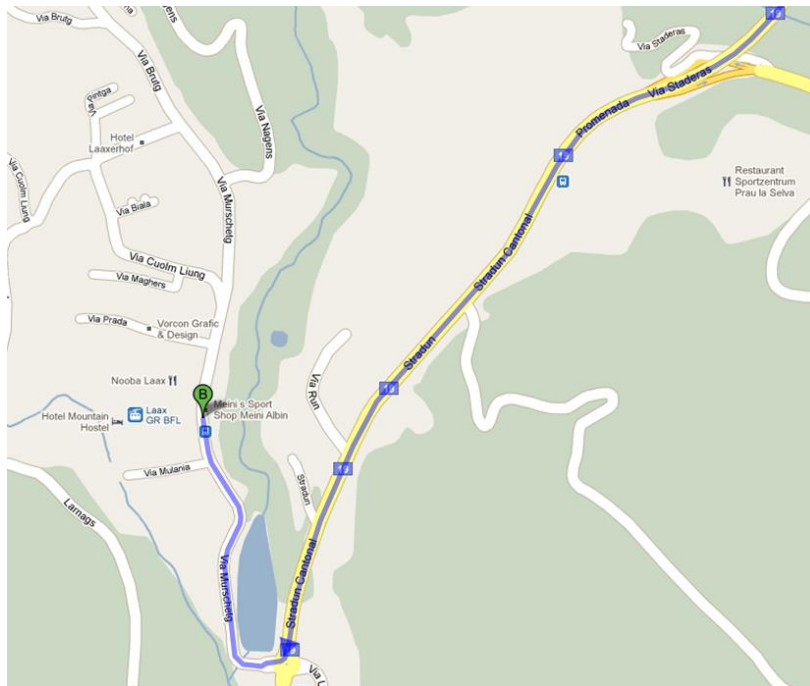


MOUNTAIN HOSTEL

How to get to Mountain Hostel Crap Sogn Gion

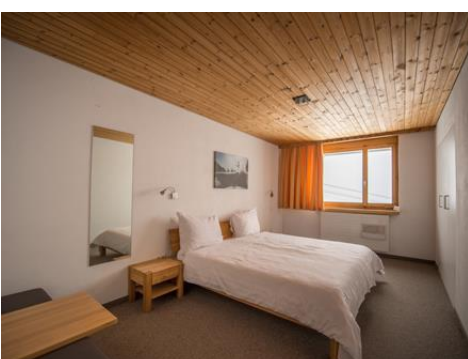
Weisse Arena Gastro AG
Mountain Hostel
Crap Sogn Gion
CH-7032 Laax

Tel.: +41 (0)81 927 73 73
mountainhostel@laax.com
www.mountain-hostel.ch
www.laax.com



Getting to us from Zurich is easy, simply take the A13 motorway and follow the signs to Chur. At the Reichenau motorway intersection, turn right onto the main road to Flims. From there, it's approximately another 15 minutes' drive to Laax-Murschetg. After you come out of the Prau Pulté tunnel, you come to a roundabout (Coop petrol station), where you take the first exit on the right. After 300 m you will see the Laax Murschetg base station on the left-hand side with the entrance to the car park.

The quickest way to get to the Mountain Hostel is via the Murschetg - Crap Sogn Gion cable car. On the day of arrival, your room will be available from 3 pm.





MOUNTAIN HOSTEL

Baggage handling

To facilitate your arrival, we would like to briefly outline how you can transport your luggage to the cable car.

Please drive directly into the car park and follow the main track until you reach the exit at the Crap Sogn Gion aerial cableway. You can deposit your luggage on the left-hand side, in front of the door of the car park. Your luggage will then be transported to the Mountain Hostel from 2 pm onwards.

